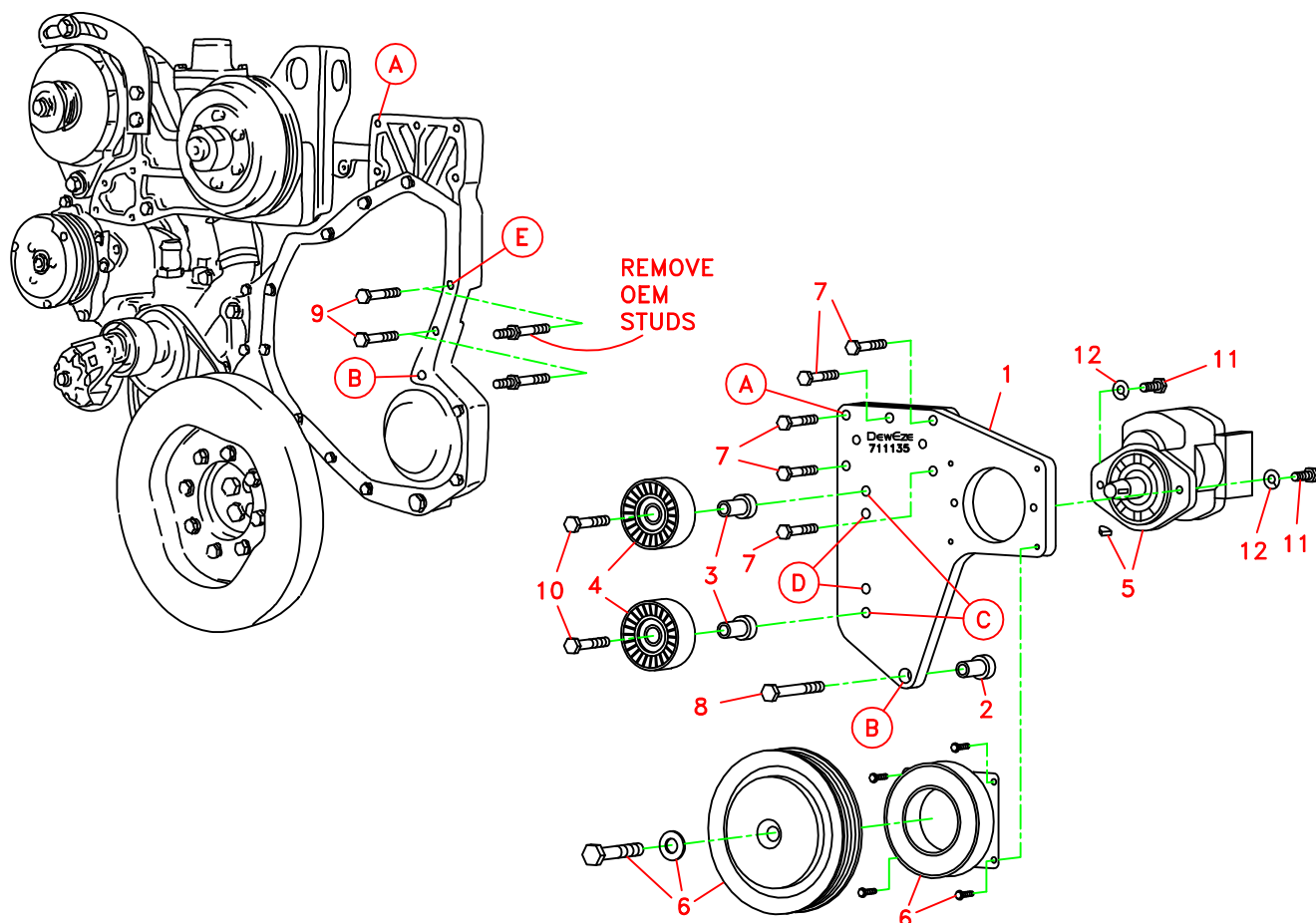


-----	Bracket Assy. (See item 1)		Kit No.	700326
711137	Bracket Bolt Pkg. (Inc. items 2, 7-9)		Make	Caterpillar
None	Pulley Bolt Pkg.		Engine	3116
711138	Idler Bolt Pkg. (Inc. items 3, 10)		Fuel	Diesel
None	Fan Spacer Bolt Pkg.		Year	1997-98
			Equipment	w/ and w/o A/C
			Revised	A 12-29-98

ITEM	PART #	DESCRIPTION
1.	710083	Pump mount plate
2.	711139	Bushing/bottom bolt
3.	711140	Bushing/idler
4.	740151	Idler/flat plastic
5.	*	Pump
6.	740148	Clutch, serpentine
7.	110180	M10 x 60 x 1.5 bolt
8.	110225	M12 x 90 x 1.75 bolt
9.	110486	M8 x 30 x 1.25 bolt
10.	110403	1/2NC x 2 1/2 bolt
11.	110425	3/8NC X 1 1/4 bolt
12.	110672	3/8 Lock washer
13.	740250	Belt/Micro-V K070976

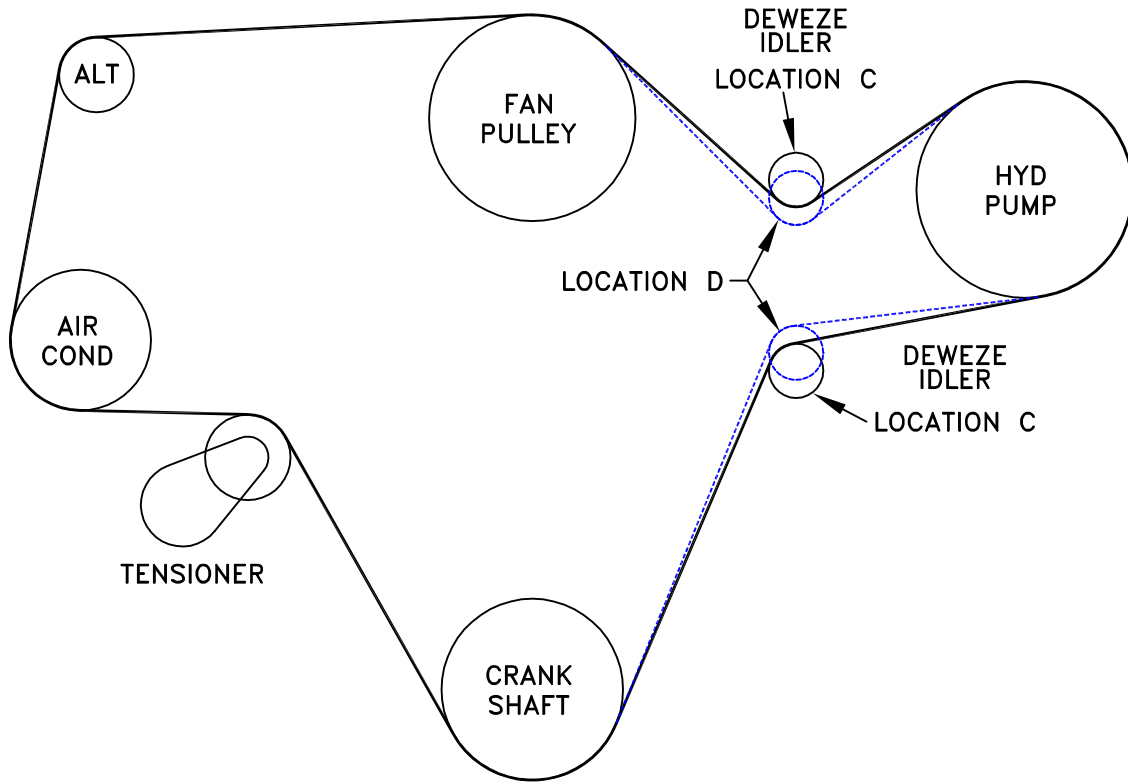
FIG. 1



(A),(B),(C)... Denotes bolt holes in engine to locate corresponding holes in Pump Brkt.

FIG. 2

BELT DIAGRAM



DewEze

Clutch Pump Kit
#700326
Caterpillar 3116
With and Without A/C
1997-98

I N S T A L L A T I O N I N S T R U C T I O N S

NOTE: Suction hose to pump must be a wire braid hose; minimum 1" I.D. for 7 & 9 gpm pumps; 1 ¼" I.D. for 12 & 17 GPM pumps. Installations with smaller suction hoses will void the pump warranty.

1. Disconnect battery.
2. Remove OEM serpentine belt.
3. Remove two OEM stud bolts from engine at location E if so equipped. Replace with two M8 x 30 bolts (9).
4. Remove OEM bolt from engine at location B.
5. Install clutch coil (6) on front of pump plate using four flange bolts supplied with clutch. Install pump on back of pump plate with two 3/8 x 1 ¼ bolts (11) and two 3/8 lock washers (12).
6. Install .625" dia. bushing in back of pump plate at location B.
7. Mount pump plate (1) using five M10 x 60 bolts (7) at location A and one M12 x 90 bolt at location B.
8. Install clutch pulley (6) using bolt and heavy washer supplied with clutch.
9. Install two idler pulleys (4) with bushing (3) and ½ x 2 ½ bolt (10) at location C. On 1998 and newer trucks position the idlers at location D for more belt wrap.
10. Install new serpentine idler belt (13) as shown in fig. 2.
11. Reconnect the battery.
12. Run the engine and check for any clearance or alignment problems. Adjust as needed.

□