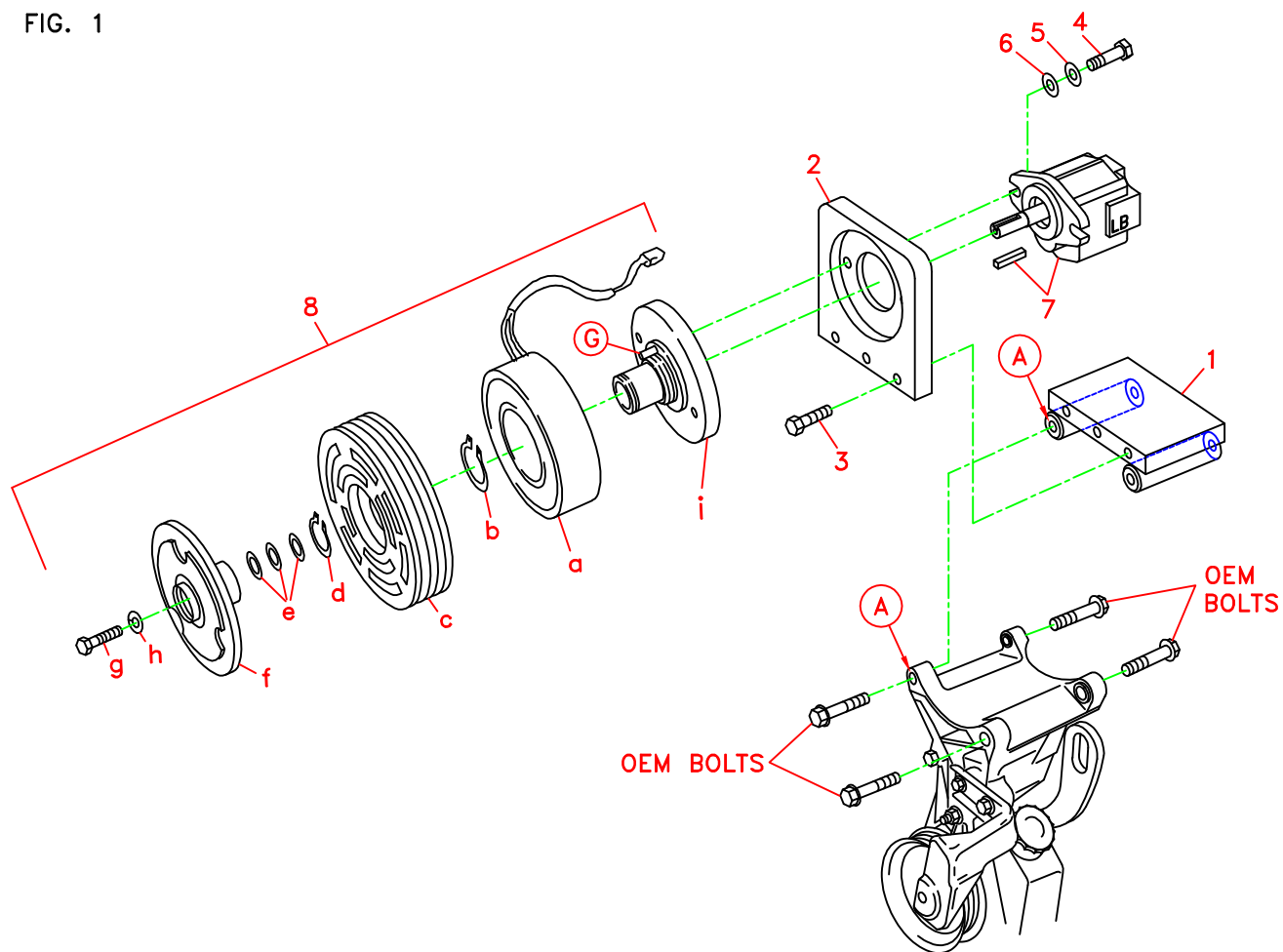


710085	Bracket Assy. (Inc. item 1, 2)		Kit No.	700327
711146	Bracket Bolt Pkg. (Inc. item 3)		Make	Isuzu/GMC
None	Pulley Bolt Pkg.		Engine	350 (5.7L)
None	Idler Bolt Pkg.		Fuel	Gas
None	Fan Spacer Bolt Pkg.		Year	1997
			Equipment	w/o A/C
			Revised	NC 12-3-97

ITEM	PART #	DESCRIPTION
1.	711141	Base plate
2.	711144	Pump mount plate
3.	110435	3/8NC x 1 1/2 Bolt
4.	110425	3/8NC x 1 1/4 Bolt
5.	110672	3/8 Lock washer
6.	110676	3/8 Flat washer
7.	*	Pump
8.	740162	Clutch/Serpentine

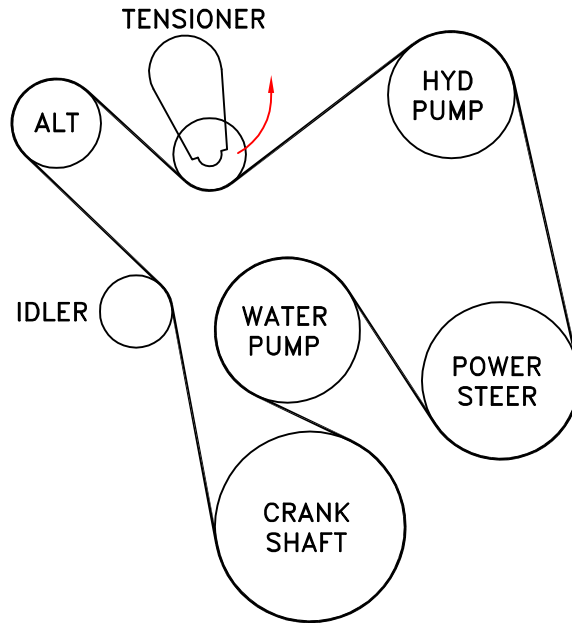
FIG. 1



(A),(B),(C)... Denotes bolt holes in engine to locate corresponding holes in Pump Brkt.

FIG. 2

BELT DIAGRAM



DewEze

Clutch Pump Kit
#700327
Isuzu/GMC
350 (5.7L)
Without A/C
1997

I N S T A L L A T I O N I N S T R U C T I O N S

Isuzu/GMC 350 (5.7L) With out A/C
1997
Clutch Pump Kit #700327

INSTALLATION INSTRUCTIONS

NOTE: Suction hose to pump must be a wire braid hose; minimum 1" I.D. for 7 & 9 gpm pumps. Installations with smaller suction hoses will void the pump warranty.

1. Disconnect battery.
2. Remove OEM belt.
3. Remove OEM idler and bracket from top of air conditioning bracket by removing four bolts, two in front and two behind. Save these bolts.
4. Mount base plate (1) onto top of air conditioning bracket using the four OEM bolts. The three holes in edge of plate face forward. Tighten the two front bolts first, then tighten the rear bolts.
5. Hold pump (7) onto back of pump plate (2) and clutch hub (8i) onto front of mounting plate, making sure anti-rotation pin (G) on front of hub is on top. Place two 3/8 x 1 1/4 bolts (4), 3/8 lock washers (5), and 3/8 flat washers (6) through pump, through mounting plate and thread into hub.
6. Slide coil (8a) over hub, aligning hole in the back plate of coil with the anti-rotation pin (G) in the hub. The wires from the coil should be top. Install large snap ring (8b) to hold coil in place.
NOTE: THE BEVEL ON BOTH SNAP RINGS MUST FACE AWAY FROM THE PUMP. REFER TO INSTRUCTION SHEET FOR THE CLUTCH FOR CORRECT INSTALLATION OF SNAP RINGS.
7. Slide clutch pulley (8c) onto hub. Install small snap ring (8d) to hold pulley in place.
8. Place the key (7) onto the pump shaft. Slide the hub/armature (8f) onto the pump shaft aligning the keyways. **NOTE: SET THE AIR GAP BETWEEN THE HUB/ARMATURE AND THE PULLEY USING SHIMS (8e) ACCORDING TO INSTRUCTION SHEET FOR CLUTCH.**
9. Thread bolt (8g) and lock washer (8h) into pump shaft. Torque to value in clutch instruction sheet.
10. Mount pump mount plate (2) with pump and clutch onto front of base plate (1) using three 3/8 x 1 1/2 bolts (3). Tighten bolts.
11. Install OEM belt with the same wrap as it came from factory. See Fig. 2.
12. Reconnect the battery.
13. Run the engine and check for any clearance or alignment problems. Adjust as needed.