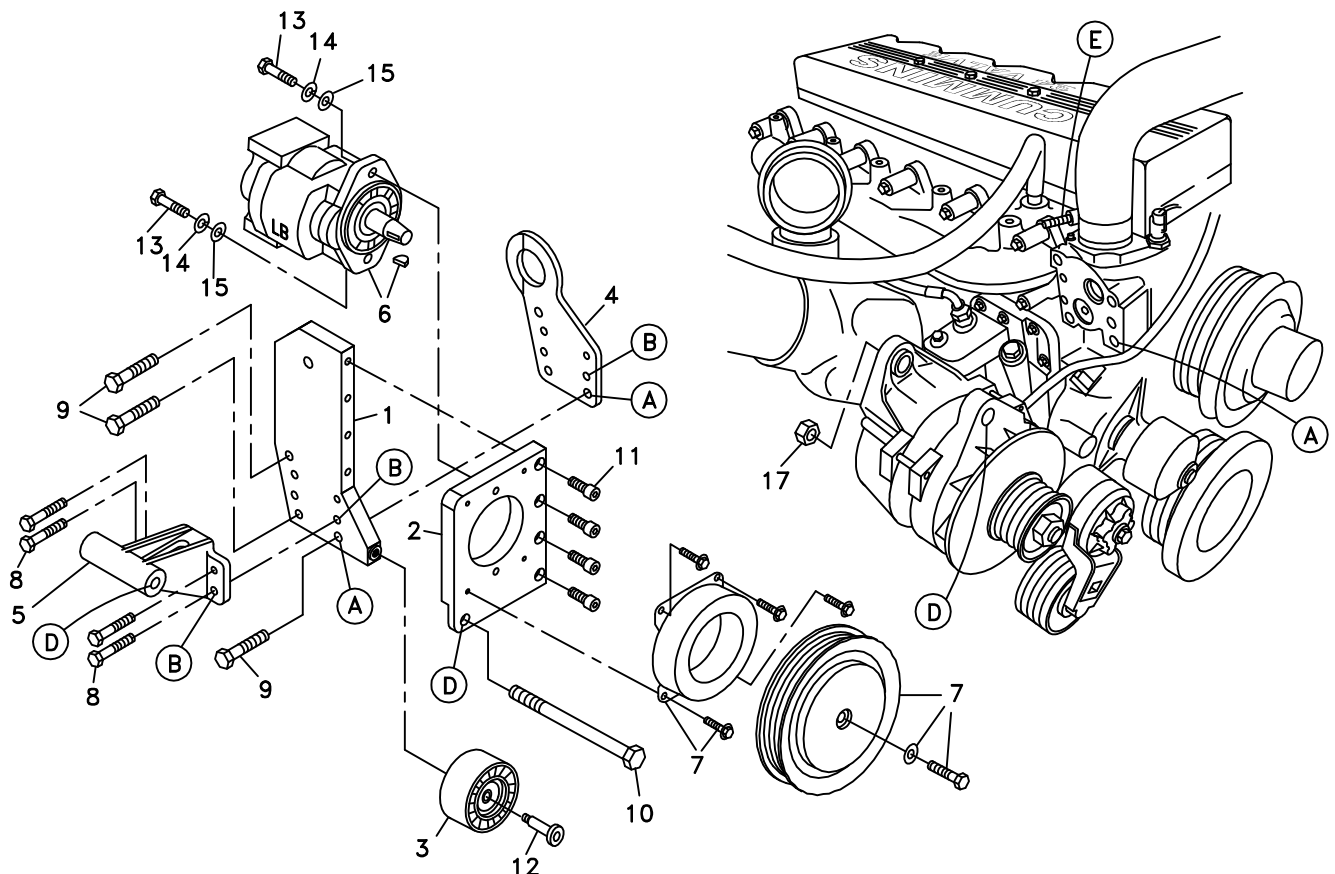


**DewEze****CLUTCH PUMP KIT**

710094	Bracket Assy. (Inc. items 1, 2)		Kit No.	700341
711210	Bracket Bolt Pkg. (Inc. items 8-11)		Make	Freightliner
None	Pulley Bolt Pkg.		Engine	Cummins 5.9L
None	Idler Bolt Pkg.		Fuel	Diesel
None	Fan Spacer Bolt Pkg.		Year	1999
			Equipment	Turbo
			Revised	B 7-19-99

ITEM	PART #	DESCRIPTION
1.	711208	Engine bracket
2.	711209	Pump plate
3.	740261	Idler pulley
4.	OEM	Engine lift bracket
5.	OEM	Top alternator bracket
6.	*	Pump
7.	740148	Clutch
8.	110558	M8 x 50 x 1.25 Bolt
9.	110526	M10 x 40 x 1.50 Bolt
10.	110240	M12 x 160 x 1.75 Bolt
11.	110395	3/8-16 x 1 Socket head bolt
12.	110213	M10 x 1.50 Torx head shoulder bolt
13.	110425	3/8-16 x 1.25 Bolt
14.	110672	3/8 Lock washer
15.	110676	3/8 Flat washer
16.	740270	Belt/Dayco 5080895
17.	OEM	M12 Nut

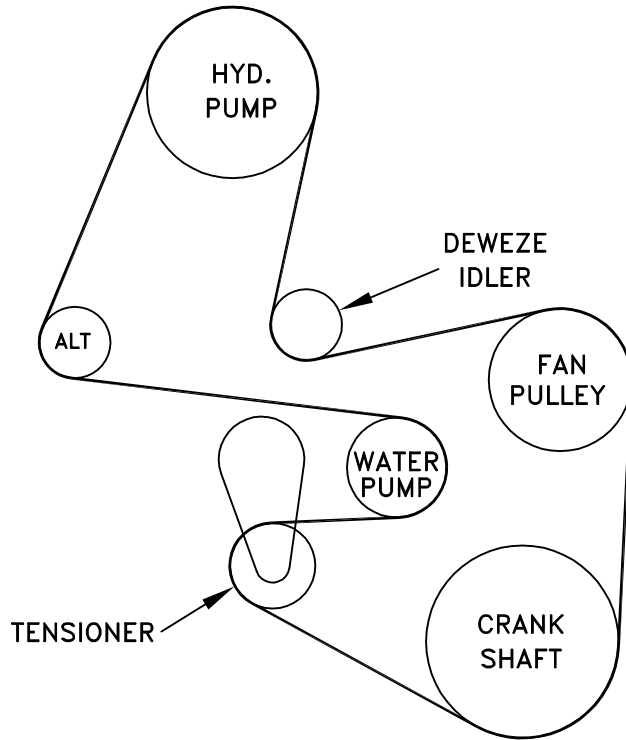
\* See master list for pump part no.



(A),(B),(C)... Denotes bolt holes in engine to locate corresponding holes in Pump Brkt.

FIG. 2

BELT DIAGRAM



# DewEze

Clutch Pump Kit  
#700341  
Freightliner  
Cummins 5.9L  
1996

## I N S T A L L A T I O N I N S T R U C T I O N S

**NOTE: Suction hose to pump must be a wire braid hose; minimum 1" I.D. for 7 and 9 gpm pumps; 1 1/4" I.D. for 12 and 17 gpm pumps. Installation with smaller suction hoses will void the pump warranty.**

1. Disconnect battery.
2. Remove M12 bolt and nut from top of alternator at Location D. Save the nut to reuse in the same place.
3. Remove four M8 bolts in top alternator bracket (5).
4. Remove three M10 bolts in engine lift bracket (4).
5. Remove radiator hose clamp from engine end of hose and replace so it is facing to the rear as shown at Location E.
6. Place three M10 x 40 bolts (9) through engine bracket (1), place lift bracket (4) on back and hold in place on engine by just starting the three bolts in the holes at Location A. Insert the four M8 x 50 bolts (8) into the holes at Location B threading in about three turns to line up the bracket. Now tighten the three M10 x 40 bolts (9) then remove the four M8 x 50 bolts.
7. Reroute the alternator ground cable so it clears the brackets.
8. Mount the top alternator bracket (5) with the four M8 x 50 bolts (8) and tighten.
9. Attach the pump (6) to the rear of the pump plate (2) with two 3/8 x 1 1/4 bolts (13), 3/8 lock washers (14), and 3/8 flat washers (15). Mount the clutch coil (7) to the front of the pump plate with the four w/z flange bolts supplied with the clutch package.
10. Attach pump plate (2) with pump to engine bracket (1) with four 3/8 x 1 socket head bolts (11).
11. Attach alternator to top alternator bracket (5) with the M12 x 160 bolt (10) and the OEM M12 nut (17) on the back of the alternator.
12. If truck is equipped with air conditioner, loosen the A/C compressor tension bolt. Remove the A/C v-belt and the OEM serpentine belt. Put the DewEze serpentine belt (16) on as shown in the belt diagram. Replace the A/C v-belt and tighten the compressor tension adjusting bolt.
13. Reconnect the battery.
14. Run the engine and check for any installation or alignment problems. Adjust as needed.

