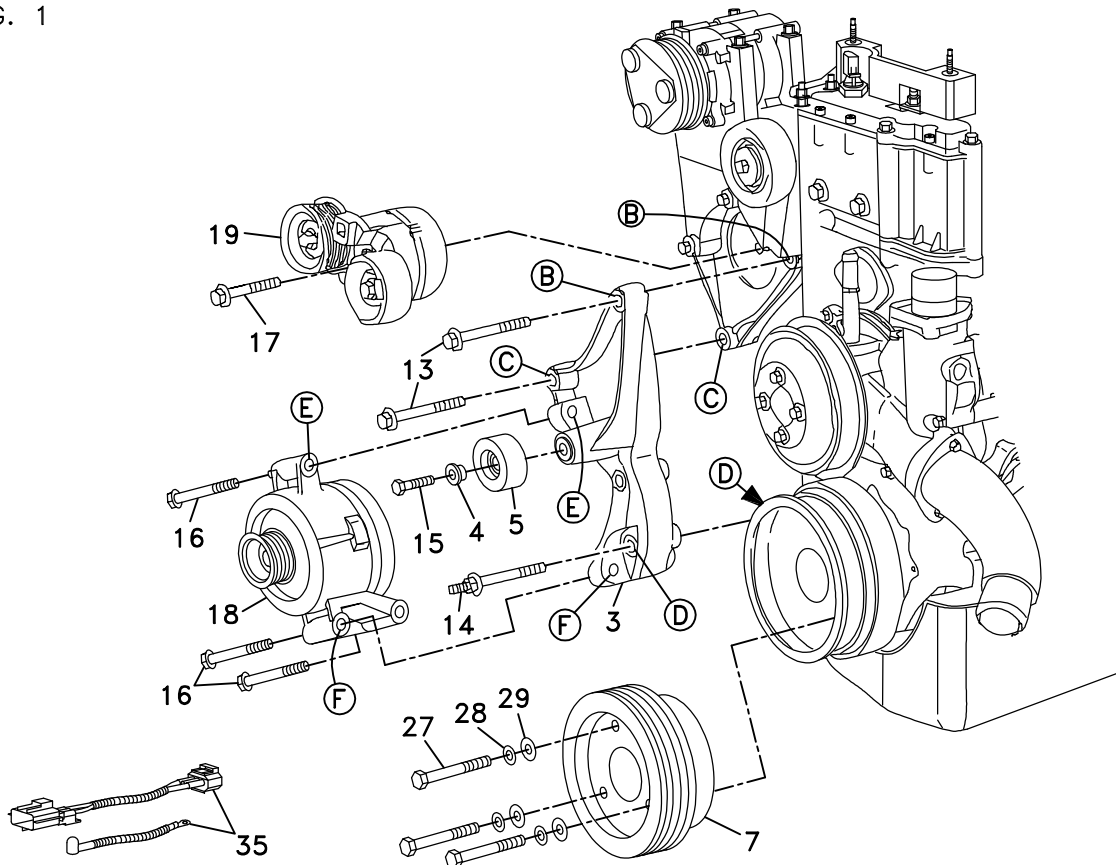


None	Bracket Assy.	Kit No.	700343	
711249	Bracket Bolt Pkg. (Inc. items 11, 13, 14, 25)	Make	Ford	
711158	Pulley Bolt Pkg. (Inc. items 27-29)	Engine	7.3L	
711193	Idler Bolt Pkg./Flat idler on alternator brkt. (Inc. items 4, 15)	Fuel	Diesel	
711250	Idler Bolt Pkg./Serp. idler on power steer. brkt. (Inc. items 4, 15, 40)	Year	1999	
None	Fan Spacer Bolt Pkg.	Equipment	w/ and w/o AC	
		Revised	B	4-18-00

ITEM	PART #	DESCRIPTION	ITEM	PART #	DESCRIPTION
1.	711235	Power steer/Hyd pump mount	21.	740294	Idler/flat
2.	711242	Pump foot mount	22.	740233	Idler/grooved
3.	711194	Lower alternator brkt.	23.	110249	7/16 x 1 3/8 LH Bolt
4.	711073	Idler bushing	24.	110250	3/8 x 2 1/2 Socket hd bolt
5.	740249	Idler pulley 2.50" dia.	25.	110442	1/2 x 1 1/4 Bolt
6.	*	Pump	26.	711247	Shoulder bushing/Clutch hub
7.	740287	Crank pulley	27.	110180	M10 x 60 Bolt
8.	740292	Clutch	28.	110689	3/8 Lock washer
9.	711246	Spacer/Pump shaft	29.	110155	3/8 Flat washer
10.	110425	3/8 x 1 1/4 Bolt	30.	110246	5/16NF x 1 3/4 Bolt
11.	110658	1/2 Flat washer	31.	700227	Radiator hose
12.	OEM	Bolt	32.	-----	-----
13.	110567	M10 x 80 Bolt	33.	-----	-----
14.	110232	M10 - M12 x 78 Stud bolt	34.	-----	-----
15.	110526	M10 x 40 Bolt	35.	730021	Alternator jumper wires
16.	OEM	Bolt	36.	OEM	Bolt
17.	OEM	Bolt	37.	OEM	Bolt
18.	OEM	Alternator	38.	740277	Belt/Poly Cog 5081265
19.	OEM	Tensioner	39.	740293	Belt/Micro-V K060695
20.	740281	Tensioner Assy. (Inc. 21, 23)	40.	711251	Spacer/.100"

\* Pump supplied by customer.

FIG. 1



(A),(B),(C)... Denotes bolt holes in engine to locate corresponding holes in Pump Brkt.

FIG. 2

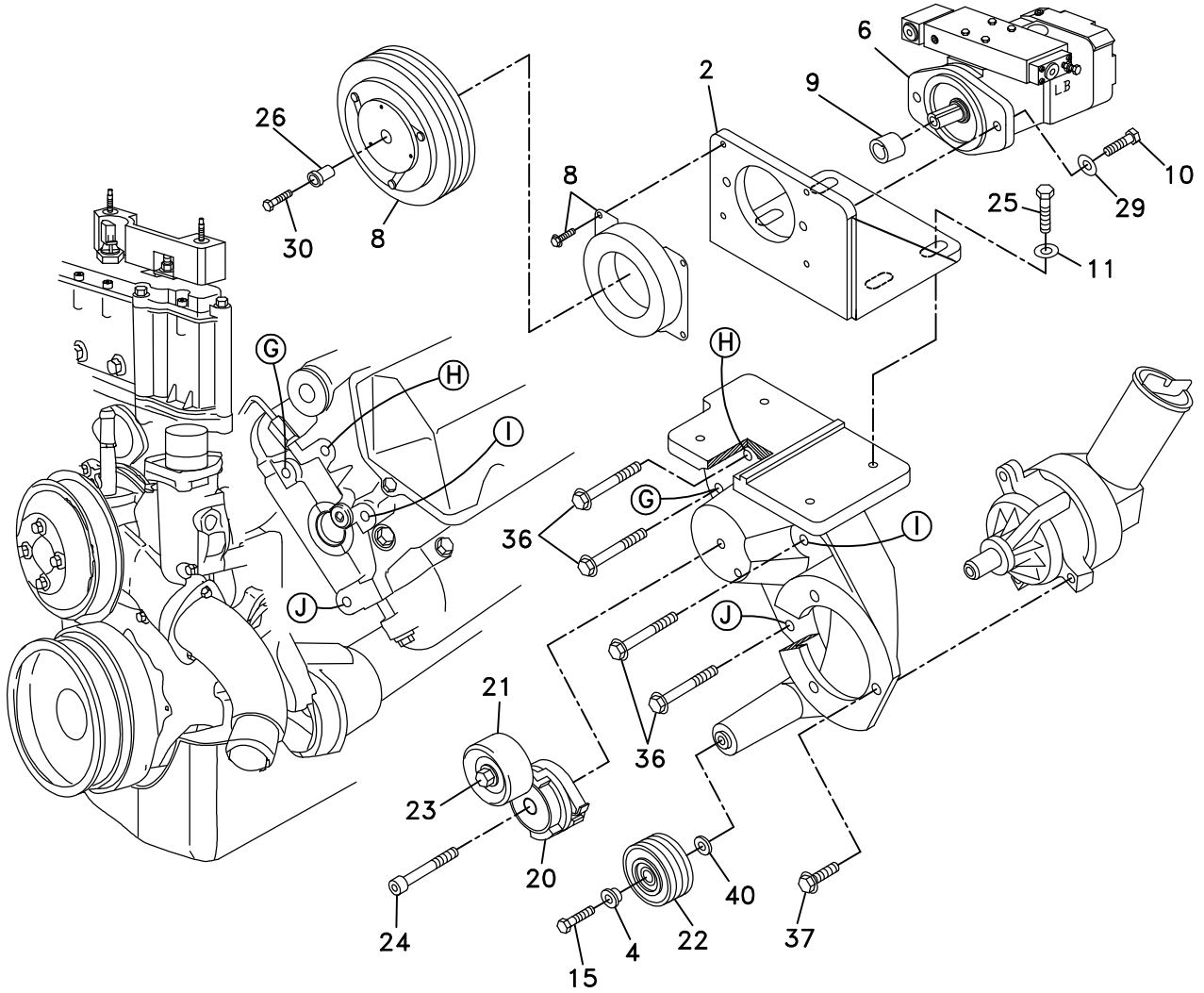


FIG. 3

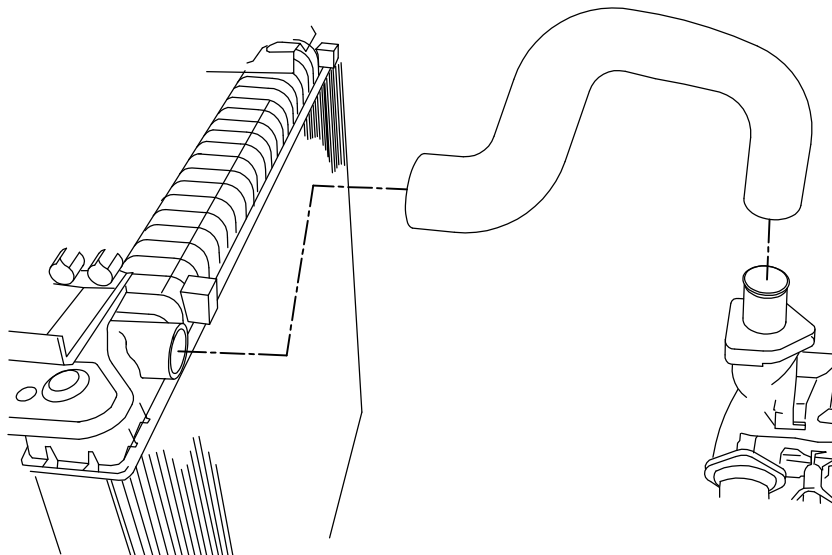
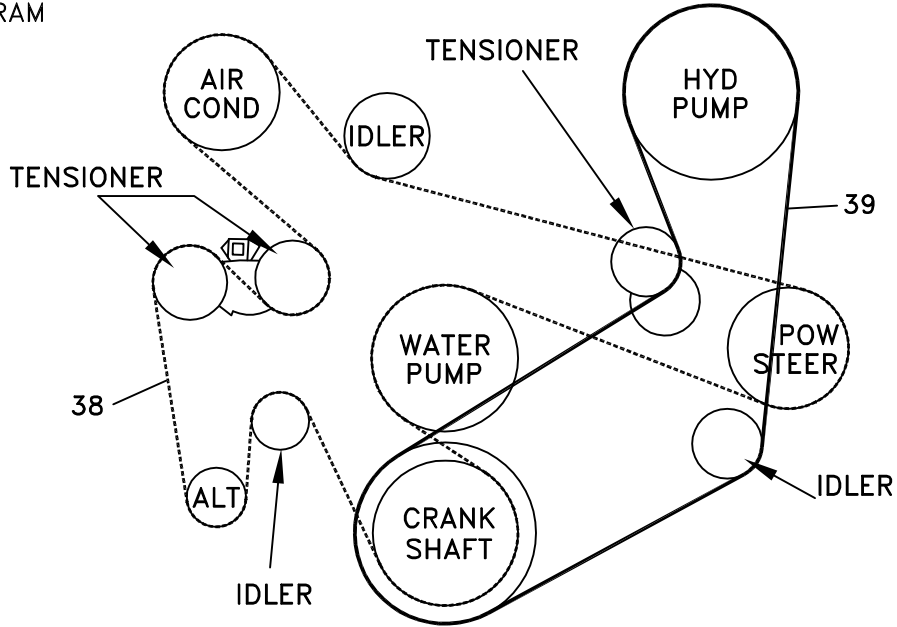


FIG. 4  
BELT DIAGRAM



# DewEze

Clutch Pump Kit  
#700343  
Ford 7.3L  
w/ and w/o A/C  
'A' mount  
(Oilgear) Pump  
1999

## I N S T A L L A T I O N   I N S T R U C T I O N S

1. Disconnect battery.
2. Remove OEM serpentine belt.
3. Drain the coolant from the radiator. Remove the upper radiator hose.
4. Remove the fan shroud and the fan.
5. Disconnect wiring from alternator.
6. Remove alternator from top OEM location by removing three bolts. Keep these bolts.
7. Make a note of how far the power steering pulley is on the shaft so it can be reinstalled in the same position. Remove the power steering pulley using a pulley removal tool. Remove the power steering pump and its mounting bracket. Keep these bolts.
8. Remove the dual tensioner.
9. Mount the crank pulley (7) to the damper using three M10 x 60 bolts (27), three 3/8 lock washers (28), and three 3/8 flat washers (29).
10. Mount the alternator to the lower alternator bracket (3) using the OEM alternator mounting bolts you removed from the top mounting location.
11. Connect the alternator jumper wires (35) to the alternator. Mount the alternator and lower alternator bracket to the bottom of the air conditioning bracket at holes B and C using two M10 x 80 bolts (13), and the M10 - M12 x 78 stud bolt (14) at location D on the engine beside the crank pulley. Connect the other ends of the jumper wires to the ends of the wires that were originally connected to the alternator.
12. Insert shoulder bushing (4) into snap ring side of idler pulley (5). With the snap ring facing forward, attach idler to mounting boss on lower alternator bracket using M10 x 40 bolt (15).
13. Install the dual tensioner to its original location using the OEM bolt.
14. Mount the DewEze power steering bracket (1) at locations G, H, I, and J using the OEM bolts. Mount the power steering pump to the bracket using the OEM bolts. Start the pulley onto the shaft. Using a pulley installer tool press the pulley on until it is lined up with the crank pulley using a straightedge across both pulleys.
15. Attach the pump footmount (2) to the top of the power steering bracket using  $\frac{1}{2}$  x  $1 \frac{1}{4}$  bolts (25) with  $\frac{1}{2}$ " flat washers (11) aligning the groove so it will slide freely forward and back. Do not tighten the bolts yet.

16. Attach the pump (6) to the back of the pump footmount (2) using two 3/8 x 1 1/4 bolts (10), and two 3/8 flat washers (29).
17. Mount the clutch coil (8) onto the front of the footmount using the four wiz flange bolts provided with the clutch. Slide the pump shaft spacer (9) over the shaft with the key in the keyway. Slide the pulley onto the shaft. Insert the shoulder bushing (26) into the center of the pulley and thread the 5/16 x 1 3/4 bolt into the end of the shaft. Line up the pump pulley with the crank pulley by sliding the footmount in or out using a straightedge across both pulleys. When the pulleys are aligned, tighten the bolts mounting the footmount.
18. Mount the serpentine groove idler (22) onto the power steering bracket at location A using an M10 x 40 bolt (15), a shoulder bushing (4) in the front of the idler and the .150" thick spacer (40) behind the idler.
19. Mount the tensioner (20) onto the power steering bracket at location K using a 3/8 x 2 1/2 socket head bolt (24).
20. Install the engine accessory drive cog belt (38) as indicated by the dashed line in the belt diagram. Install the pump drive belt (39) as indicated by the solid line in the belt diagram. The serpentine groove idler (22) has eight grooves. The belt has six grooves. To be properly aligned, place the belt on the rear six grooves of the idler.
21. Install the fan and fan shroud.
22. Slide the long leg of the DewEze radiator hose (31) onto the thermostat housing. Slide the short leg onto the radiator. Secure with OEM hose clamps. Replace the coolant back in the radiator.
23. Connect the battery.
24. Run the engine and check for any clearance or alignment problems. Adjust as needed.