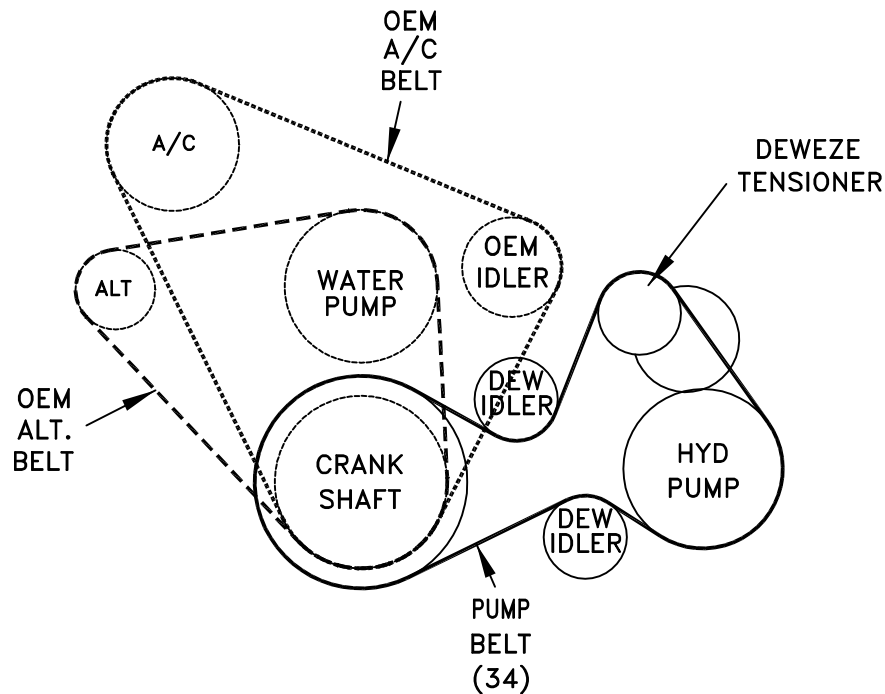


None	Bracket Assy.		Kit No.	700387
711387	Bracket Bolt Pkg. (Inc. items 11, 12, 17, 21-23)		Make	Mitsubishi FE-HD
711388	Pulley Bolt Pkg. (Inc. item 28, 22, 23)		Engine	3.9L
711389	Idler Bolt Pkg. (Inc. item 13)		Fuel	Diesel
740329	Tensioner Assy. (Inc. items 6, 7, 15, 16)		Year	2001-
			Equipment	Turbo, A/C, 2 WD
			Revised	NC 8-8-01

ITEM	PART #	DESCRIPTION			
1.	711386	Engine bracket	18.	110425	3/8-16 x 1 1/4 Bolt
2.	711390	Pump plate	19.	110676	3/8 Flat washer
3.	711392	Filler block	20.	OEM	Spacer
4.	740354	Crank pulley	21.	711391	M8 x 120 x 1.25 Tap bolt
5.	740350	Idler pulley/flat	22.	110674	5/16 Lock washer
6.	740289	Tensioner	23.	110665	5/16 Flat washer
7.	740233	Idler pulley/6-groove	24.	OEM	Hub/idler
8.	*	Pump/rear port	25.	OEM	Nut/tensioner
9.	740144	Clutch	26.	OEM	Nut/fan
10.	OEM	Idler pulley/AC	27.	OEM	Belt/Air cond.
11.	110479	M10 x 30 x 1.5 Bolt	28.	110291	M8 x 60 x 1.25 Gr 10.9 Bolt
12.	110526	M10 x 40 x 1.5 Bolt	29.	OEM	Fan
13.	110253	7/16-14 x 1.18 Flange hd bolt	30.	510960	10-24 x 1/2 Screw
14.	110250	3/8-16 x 2 1/2 Skt head bolt	31.	110631	10-24 Lock nut, nylon
15.	110248	7/16-14 x 1 3/8 LH Bolt	32.	720230	Intercooler hose
16.	110252	Large cupped washer	33.	OEM	Hose clamp
17.	110395	3/8-16 x 1 Skt head bolt	34.	740356	Belt/Micro-V K060512

FIG. 1
BELT DIAGRAM



(A)(B)(C)... Denotes bolt holes in engine to locate corresponding holes in Pump Brkt.

FIG. 2

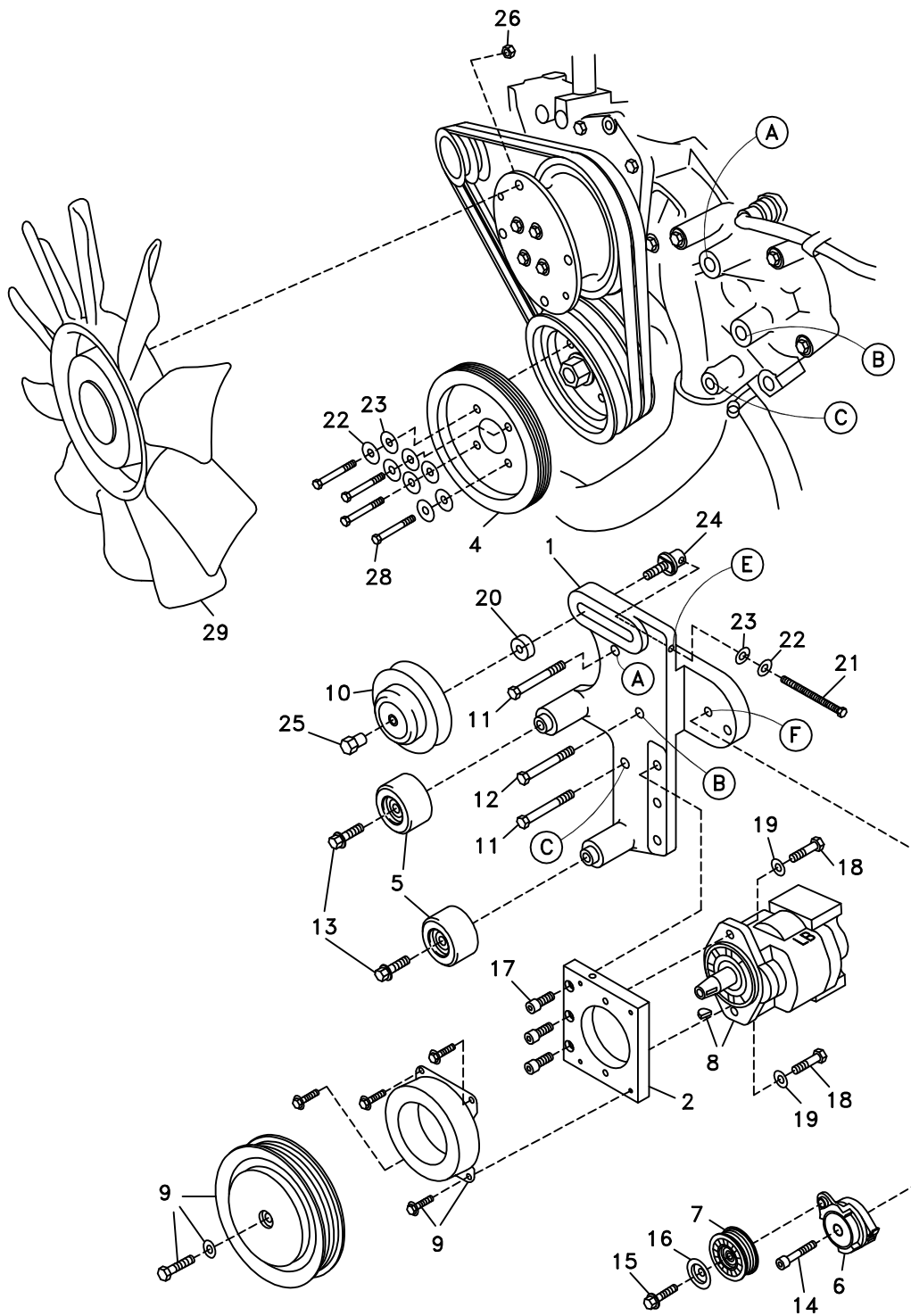


FIG. 3

CUT FAN SHROUD AS SHOWN - BOTH OUTSIDE AND INSIDE WALLS

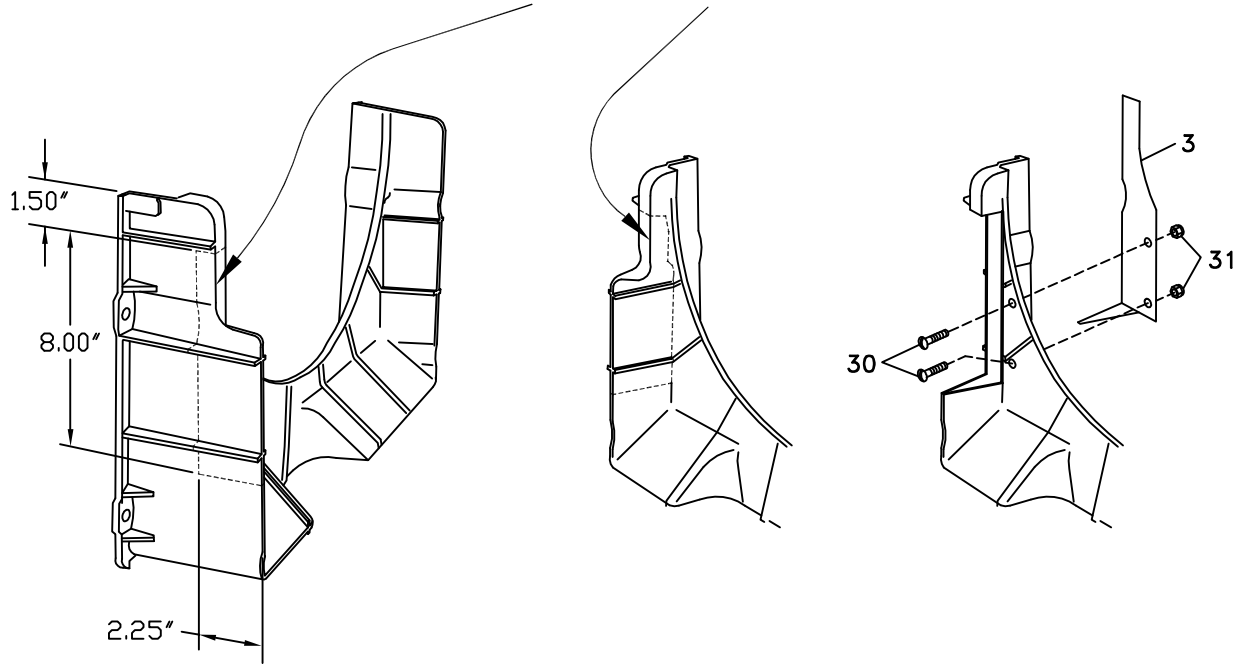
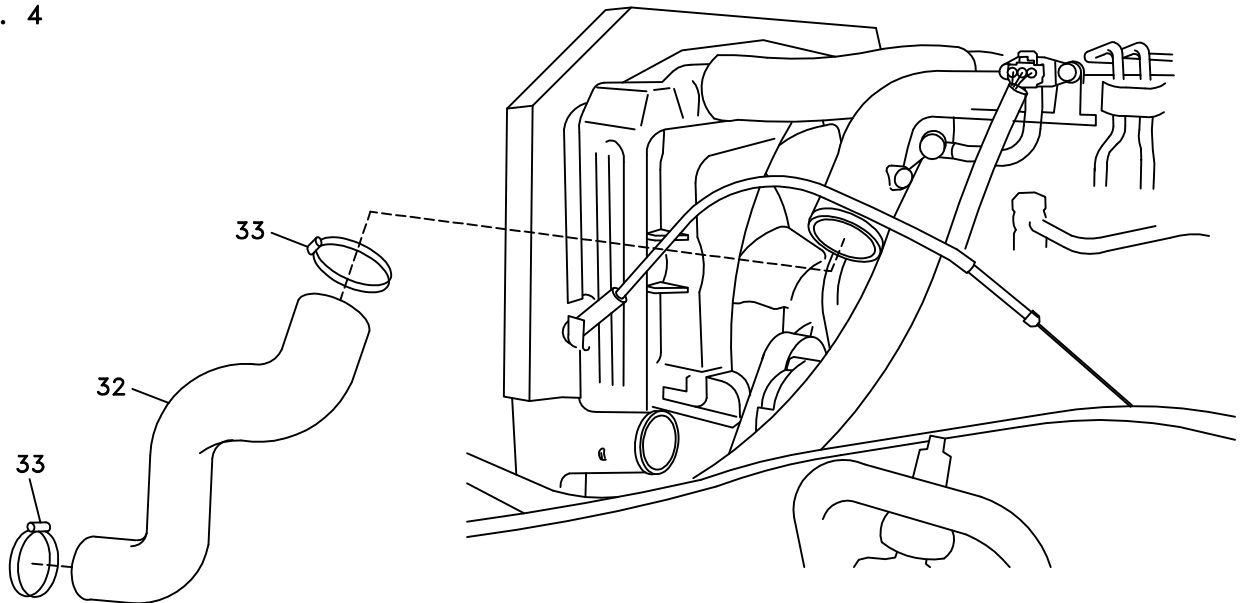


FIG. 4



DewEze

Clutch Pump Kit
#700387
Mitsubishi
3.9 L
Turbo diesel
'A' mount
2001-

INSTALLATION INSTRUCTIONS

1. Disconnect the battery.
2. Drain enough coolant from the radiator to get the level below the top hose. Remove the hose.
3. Remove the OEM intercooler hose.
4. Remove the OEM top fan shroud. Unbolt the fan by loosening four nuts (26). Lift out the fan.
5. Remove the lower shroud from the radiator. Cut out the section from the shroud as shown in Fig. 3. Remove both the outer and inner walls. Hold the filler plate (3) inside the cutout in the front of the shroud. Mark the two hole locations in the plate onto the shroud. Drill holes with a 3/16" drill. Attach the plate to the shroud with the two 10-24 x 1/2 screws (30) and two 10-24 lock nuts (31). Mount the lower shroud back on the radiator.
6. Attach the crankshaft pulley (4) to the crankshaft damper with four M8 x 60 bolts (28), four 5/16 lock washers (22) and four 5/16 flat washers (23).
7. Loosen the air conditioner tensioner adjusting bolt (21). Remove the air conditioner belt. Remove the OEM tensioner bracket from the engine. Disassemble the individual pieces from the tensioner.
8. Bolt the engine bracket onto the engine at locations A and C with the M10 x 30 bolt (11). Thread the M10 x 45 (12) bolt into location B.
9. Reassemble the A/C tensioner parts in the DewEze engine bracket (1): Hold the idler hub (24) in the cavity in the rear, lining up the flat spots on the shoulder so they fit in the slot. Place the lock washer (22) and the flat washer (23) on the long adjusting bolt (21), insert through the hole in the edge of the bracket at location E, and thread into the idler hub. Place the spacer (20) on the front of the hub. Insert the nut (25) into the center of the idler (10) and thread onto the hub and tighten. Replace the OEM air conditioner belt and adjust.
10. Mount the two idlers (5) onto the bosses on the engine bracket using the two 7/16 x 1 3/16 flange head bolts (13).
11. Bolt the pump (8) to the back of the pump plate (2) with two 3/8 x 1 1/4 bolts (18) and two 3/8 flat washers (19). Screw the fittings into the pump, but do not tighten them yet.
12. Bolt the pump plate (2) to the engine bracket (1) with the three 3/8 x 1 socket head bolts (17) at location D. Do not tighten .
13. Turn the fittings on the rear of the pump so the hoses can be routed to them. Remove the pump and pump plate to get access to the fittings so they can be tightened. Replace the bracket back on the engine and tighten the bolts.

14. Mount the clutch (9) to the front of the pump plate with the four 1/4 x 1/2 flange bolts positioning the wire to the outboard side. Mount the clutch pulley to the pump shaft with the 5/16 x 1 1/4 bolt and heavy flat washer.
15. Attach the idler pulley (7) onto the tensioner (6) with the 7/16 x 1 3/8 left hand flange head bolt (15) with the large cupped washer (16). Install the tensioner on the engine bracket at location F with the 3/8 x 2 1/2 socket head bolt (14).
16. Install the pump drive belt (34).
17. Replace the fan using the OEM nuts (26). Replace the upper shroud. Put the coolant back in the radiator. Replace the OEM radiator hose. Install the new intercooler hose (32) using the OEM hose clamps (33).
18. Connect the battery.
19. Run the engine and check for any clearance or alignment problems. Adjust as needed.