

International 466:D, 2005+, A Pump, 5-17 GPM, Rear Port

Bolt Packages:

Bracket	711665	(Inc. item 12-15)
Idler pulley	711666	(Inc. item 7, 16-18)
Pulley	None	
Tensioner	None	

Bracket Assy.	711664	(Inc. item 1-5)
Issue Date	11-17-04	Revision Date C 2-9-06

Item Part No. Description

1.	711658	Pump bracket	11.	742009	Clutch
2.	711659	Top alternator bracket	12.	110425	3/8-16 x 1 1/4 Bolt
3.	711660	Bottom alternator bracket	13.	110465	3/8-16 x 1 1/4 Socket head bolt
4.	711661	Idler bracket	14.	110395	3/8-16 x 1 Socket head bolt
5.	711662	Gusset	15.	110171	M10 x 1.5 x 110 Socket head bolt
6.	-----	-----	16.	110180	M10 x 1.5 x 60 Bolt
7.	711641	Idler bushing, .668" dia., .500" flange width	17.	110705	M10 x 1.5 x 55 Bolt
8.	740397	Idler, 8-groove	18.	110676	3/8 Flat washer
9.	740339	Idler, flat	19.	742021	Belt, Micro-V K081153
10.	*	Pump, A mount, rear port			

* See pump list for sizes and part numbers.

FIG. 2
BRACKET ASSY, REAR VIEW

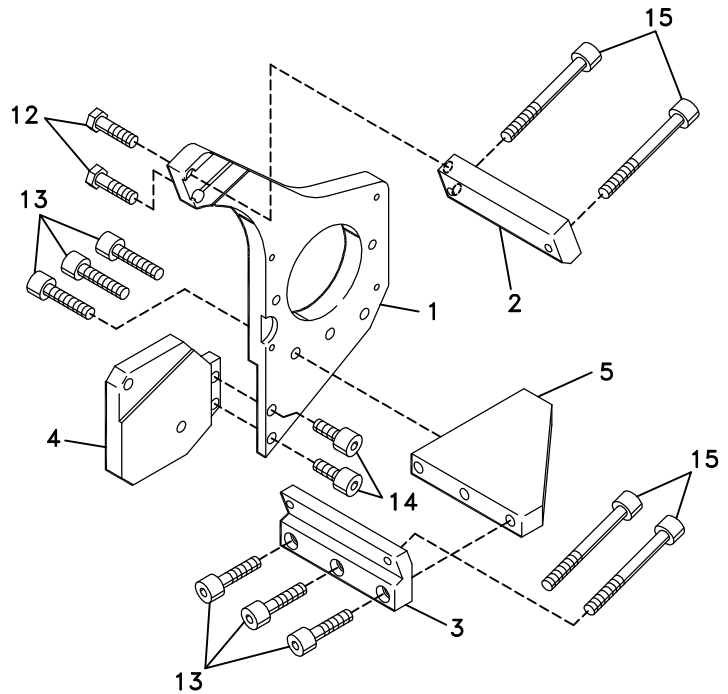
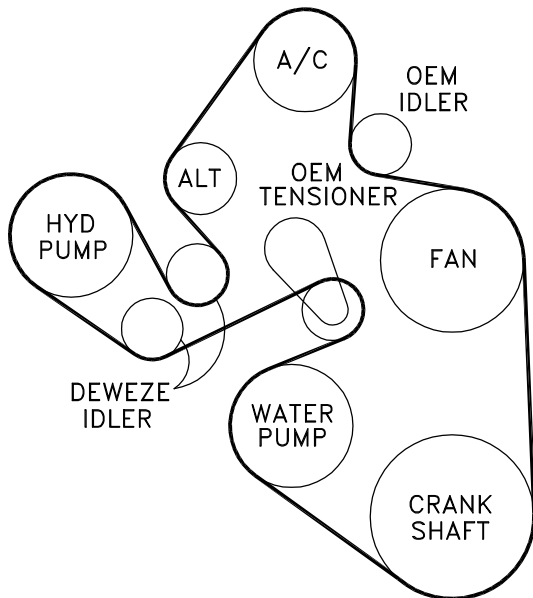


FIG. 1
BELT DIAGRAM



DewEze

Clutch Pump Kit

Clutch Pump Kit
700437
International
466
'A' mount
2005+

INSTALLATION INSTRUCTIONS

1. Disconnect the battery.
2. Remove the passenger side inner fender for easier access to the engine. Remove the intercooler tube.
3. Take the air conditioner line loose from the support bracket on the frame. Remove the bracket from the frame.
4. Attach the top alternator bracket (2) to the top of the alternator at Locations A and B with two M10 x 110 socket head bolts (15).
5. Attach the bottom alternator bracket (3) to the gusset (5) on the side with the 2.00" hole spacing with three 3/8 x 1 1/4 socket head bolts (13). Install this on the bottom of the alternator at Location C and D with two M10 x 110 socket head bolts (15).
6. Attach the idler bracket (4) to the inset on the front of the pump bracket (1) at Location G with two 3/8 x 1 socket head bolts (14) inserted through the back of the bracket. Attach the pump (10) to the rear of the pump bracket with two 3/8 x 1 1/4 hex head bolts (12) and two 3/8 flat washers (18).
7. Attach the pump bracket with pump to the top and bottom alternator brackets using two 3/8 x 1 1/4 hex head bolts (12) in the top and three 3/8 x 1 1/4 socket head bolts (13) at the bottom into the gusset. Tighten all bolts.
8. Insert the M10 x 60 bolt (16) through a 3/8 flat washer (18), through the 8 groove idler (8), through an idler bushing (7) and into the idler bracket at Location H. Insert the M10 x 55 bolt (17) through a 3/8 flat washer (18), through the flat idler (9), through the idler bushing (7) and into the idler bracket at Location I.
9. Mount the clutch coil (11a) with the four 1/4 x 1/2 flange head bolts (11b) provided with the clutch. Mount the clutch pulley (11c) with the 5/16 x 1 1/4 bolt (11d) and heavy flat washer (11e) provided with the clutch.
10. Replace the OEM intercooler tube using the OEM clamps. The tube will need to be rotated up from its original position to clear the clutch.
11. Replace the inner fender.
12. Run the engine and check for any clearance or alignment problems. Adjust as needed.