

UD 1300, 289 cu. in. : D, 2005+, A Pump, 5, 7, 9, 12 GPM, Side Port

Bolt Packages:

Bracket	711711	(Inc. item 12, 13, 15-17, 22, 25)
Fan spacer	711675	(Inc. item 19)
Crank pulley	711676	(Inc. item 18)
Tensioner	None	

Bracket Assy. 711673 (Inc. items 1-5)

Issue Date 7-28-05 Revision Date A 9-12-05

Item Part No. Description

1.	711668	Engine bracket	14.	OEM	Bolt
2.	711669	Pump plate	15.	110676	3/8 Flat washer
3.	711670	Top plate	16.	110420	3/8-16 x 1 Bolt
4.	711671	Alternator bracket	17.	110705	M10 x 1.5 x 55 Bolt
5.	711672	Tensioner bracket	18.	110773	M12 x 1.5 x 100 Bolt
6.	700275	Fan spacer	19.	110144	M8 x 1.25 x45 Stud bolt
7.	740391	Crankshaft pulley	20.	OEM	Nut
8.	743002	Tensioner	21.	742023	Belt, Micro-V K060415
9.	*	Pump	22.	110204	Shim, 1.00 O.D. x .668 I.D. x .015 thick
10.	742016	Clutch	23.	711709	Fan shroud support
11.	110425	3/8-16 x 1 1/4 Bolt	24.	711710	Fan shroud spacer
12.	110526	M10 x 1.5 x 40 Bolt	25.	110455	M8 x 1.25 x 55 Bolt
13.	110465	3/8-16 x 1 1/4 Socket head bolt	26.	OEM	Plastic washer

* See pump list for sizes and part numbers.

FIG. 1
BELT DIAGRAM

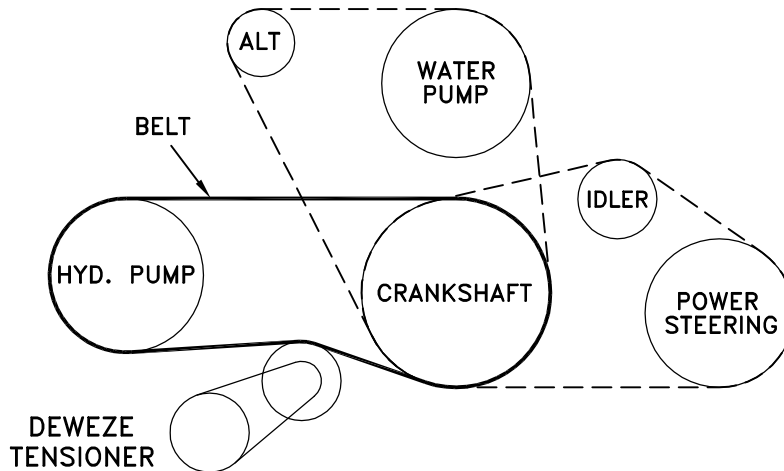
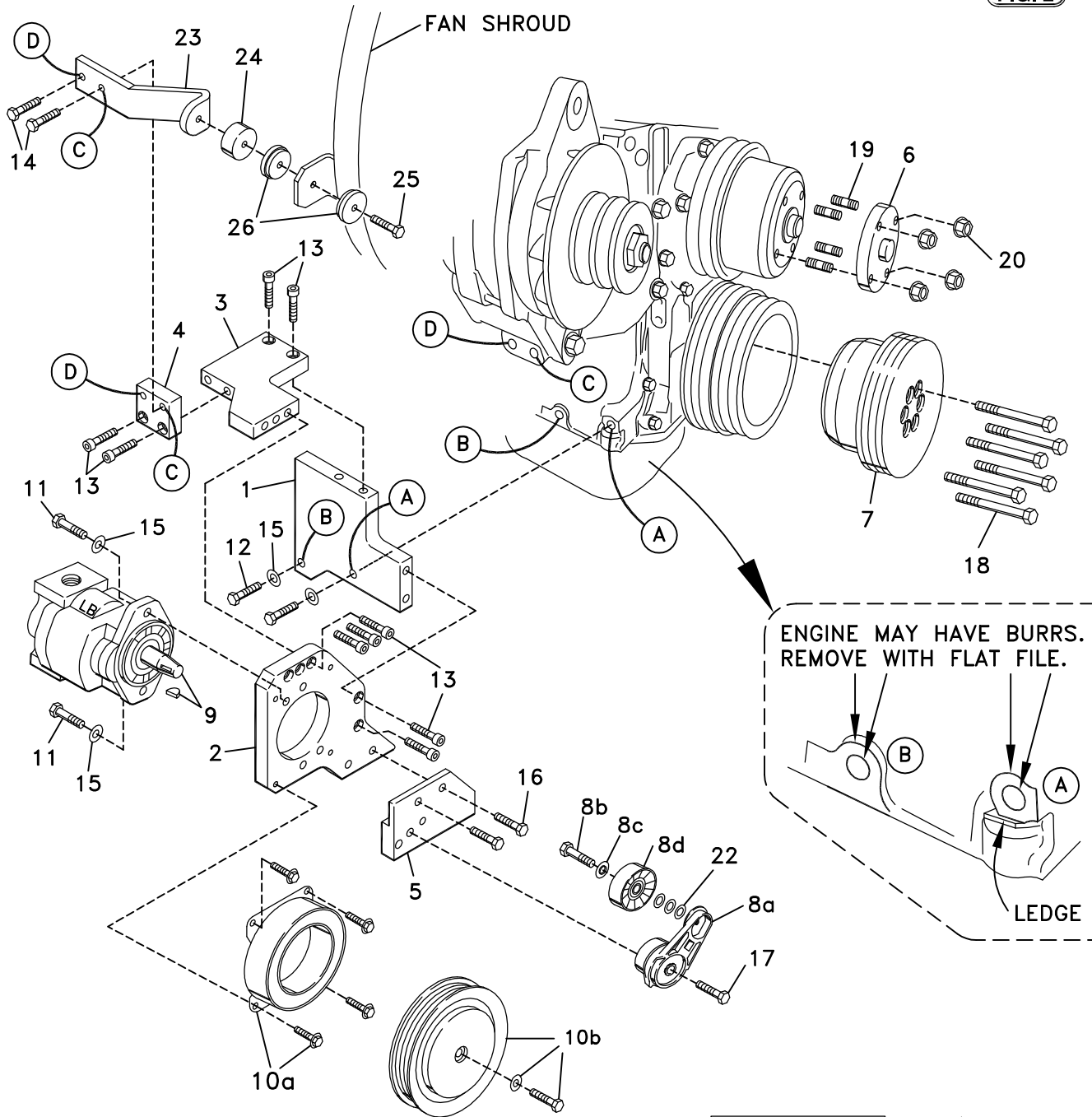


FIG. 3
FAN SHROUD ATTACH



FIG. 2



ENGINE MAY HAVE BURRS.
REMOVE WITH FLAT FILE.

BRACKET ASSY.

(A),(B),(C)... Denotes bolt holes in engine to locate corresponding holes in Pump Brkt.

DEWEZE

Clutch Pump Kit

Clutch Pump Kit
700443
UD 1300
289 cu.in.
'A' mount
2005+

INSTALLATION INSTRUCTIONS

1. Disconnect the battery.
2. Remove the passenger side inner fender and support bracket for easier access to the engine.
3. Drain the coolant down to remove the top radiator hose. Remove the radiator support rod. Remove the intercooler tube.
4. Remove the fan shroud and fan. Remove the OEM fan shroud support attached to the alternator (Location C and D). Remove the OEM fan stud bolts. Replace with the M8 x 45 stud bolts (19).
5. Attach the crank pulley (7) with six M12 x 1.5 x 100 bolts (18).
6. Check the bracket mounting bosses on the engine at Locations A and B for burrs. If burrs are present, remove them with a flat file. Do not use a grinder that would remove too much material and change the bracket alignment. Attach the top plate (3) to the engine bracket (1) with two 3/8 x 1 1/4 socket head bolts (13). Attach the alternator bracket (4) to the edge of the top plate with two 3/8 x 1 1/4 socket head bolts (13). Mount these brackets to the engine with two M10 x 40 bolts and two 3/8 flat washers (15) at Locations A and B and two M8 x 40 bolts at Locations C and D into the bottom of the alternator. There is a ledge below the hole at Location A. Be sure to set the bracket above the ledge so the bracket does not set on the ledge which would change the bracket alignment. Place the fan shroud support (23) on top of the alternator bracket (4) and replace the two OEM bolts at Locations C and D into the bottom of the alternator.
7. Attach the pump (9) to the pump plate (2) with two 3/8 x 1 1/4 bolts (11) with two 3/8 flat washers (15). Attach the pump plate with pump to the engine bracket with five 3/8 x 1 1/4 socket head bolts (13).
8. Mount the clutch coil (10a) with the four 1/4 x 1/2 flange head bolts provided with the clutch. Mount the clutch pulley (10b) with the 5/16 x 1 1/4 bolt and heavy flat washer provided with the clutch.
9. Attach the tensioner bracket (5) to the pump plate with two 3/8 x 1 bolts (16). Unbolt the idler pulley (8d) from the tensioner arm (8a). Place the three .015" shims (22) on the idler boss on the tensioner. Replace the idler on the boss, place the OEM washer (8c) on the idler, and thread the OEM bolt (8b) back into the tensioner. Mount the tensioner assembly (8) to the bracket with the M10 x 55 bolt (17).
10. Put the belt (21) in place on the pulleys. Mount the fan spacer on the stud bolts. Replace the fan and fan shroud. Attach the fan with the four OEM nuts (20). Hold the fan shroud spacer (24) on the shroud support (23) with one OEM plastic washer (26) between the spacer and the shroud tab. Place the other OEM plastic washer in front of the tab and fasten with the M8 x 55 bolt (25). Do this at all three locations around the shroud.
11. Replace the radiator hose and the coolant. Replace the OEM intercooler tube using the OEM clamps. Replace the radiator support rod. Replace the inner fender.
12. Reconnect the battery.
13. Run the engine and check for any clearance or alignment problems. Adjust as needed.