

FIG. 3

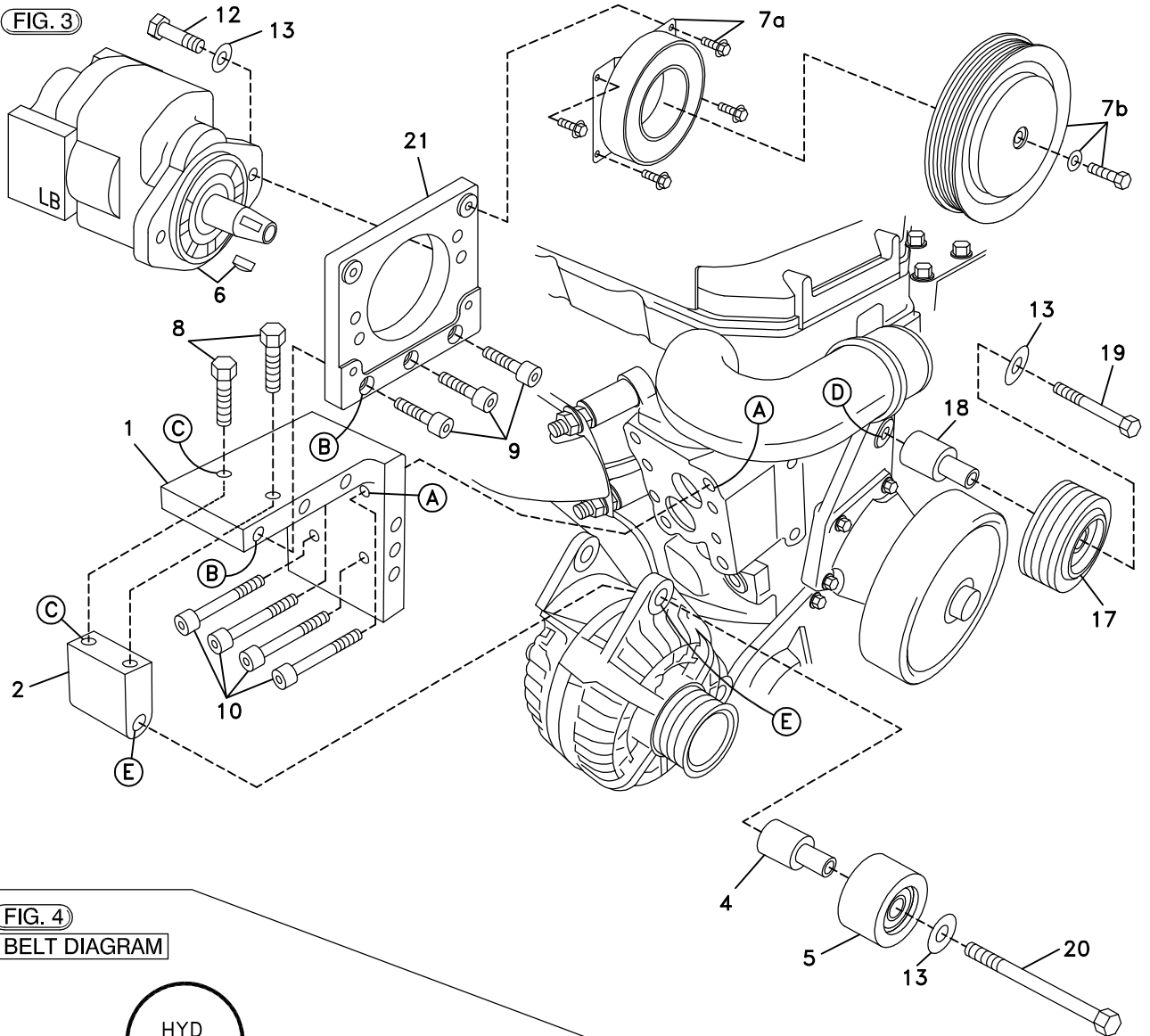


FIG. 4

BELT DIAGRAM

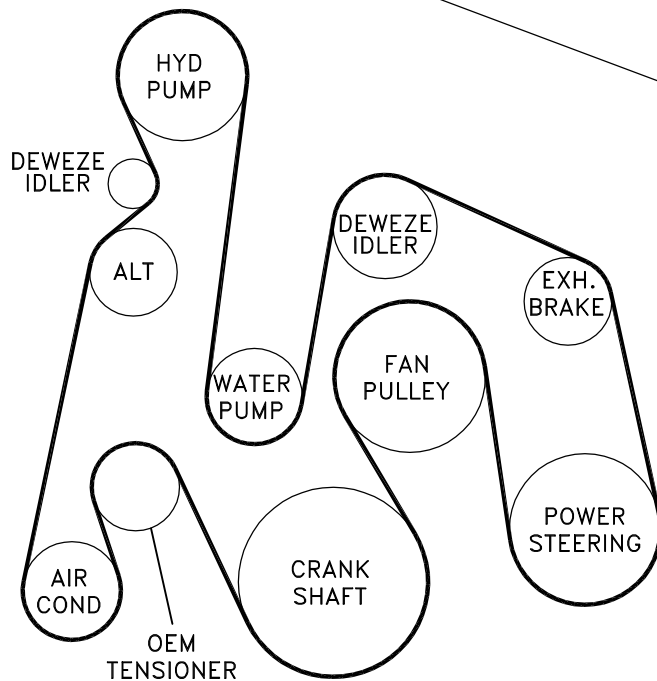
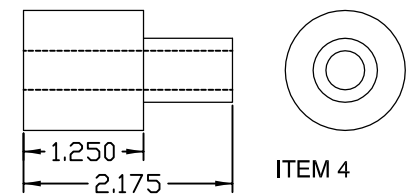
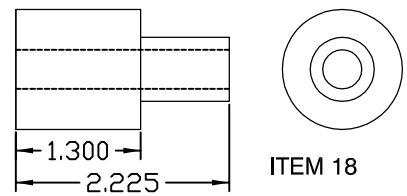


FIG. 5

IDENTIFYING THE IDLER BUSHINGS



DewEze

Clutch Pump Kit

Clutch Pump Kit
700454
Dodge 5.9
Diesel
Exhaust Brake
2006+

INSTALLATION INSTRUCTIONS

1. Disconnect the battery.
2. Remove the nut holding the front of the air filter housing. Lay the housing back out of the way. See Fig. 2.
3. Remove the OEM fan shroud support bracket from the front of the engine. Replace it with the flat support bracket (23) in the kit. Attach with M8 x 25 bolt (25) and 5/16" flat washer (27) into radiator. Insert the M8 x 30 bolt (24) into the 5/16" flat washer (27), through the hole in the shroud, through the bracket, and into the M8 nut (26).
4. Remove the OEM belt.
5. Remove the top alternator bolt at Location E. Loosen the bottom alternator bolt and pivot the alternator out away from the engine.
6. Remove the top alternator bracket and the lifting lug.
7. Remove the OEM top idler at Location D. Insert the long idler bushing (18) into the serpentine idler (17). Mount the idler to the engine with a M10 x 75 bolt (19) with a 3/8 flat washer (13) using Loctite®.
8. Mount the engine bracket (1) to the engine at Location A with four M10 x 35 bolts (10). Attach the top alternator bracket (2) to the underside of the engine bracket at Location C with two 3/8 x 1 1/2 bolts (8).
9. Insert the short idler bushing (4) into the flat idler (5). Mount the idler to the top of the alternator at Location E with the M10 x 150 bolt (20) and 3/8 flat washer (13).
10. Mount the pump (6) to the back of the pump plate (21) with two 3/8 x 1 1/4 bolts (12) and two 3/8 flat washers (13). Bolt the pump plate with pump to the engine bracket with three 3/8 x 1 1/4 socket head bolts.
11. Mount the clutch coil (7a) to the pump bracket with four 1/4 x 1/2 flange bolts (7b). Mount the clutch pulley (7c) to the pump shaft with the 5/16 x 1 1/4 bolt (7d) and heavy flat washer (7e) making sure the key is in place on the shaft.
12. Install the belt (23) as shown in the diagram (Fig. 4).
13. Lay the air filter housing down to its original position. Replace and tighten the OEM nut holding the air filter. Pull the OEM air filter restriction indicator (16) out from the air filter housing (Fig. 2). Push the plastic elbow (14) into one end of the 1/2" hose (15) and the indicator into the other end of the hose. Insert the plastic elbow into that hole in the housing pointing it to the rear.
14. Reconnect the battery.
15. Run the engine and check for any clearance or alignment problems. Adjust as needed.