

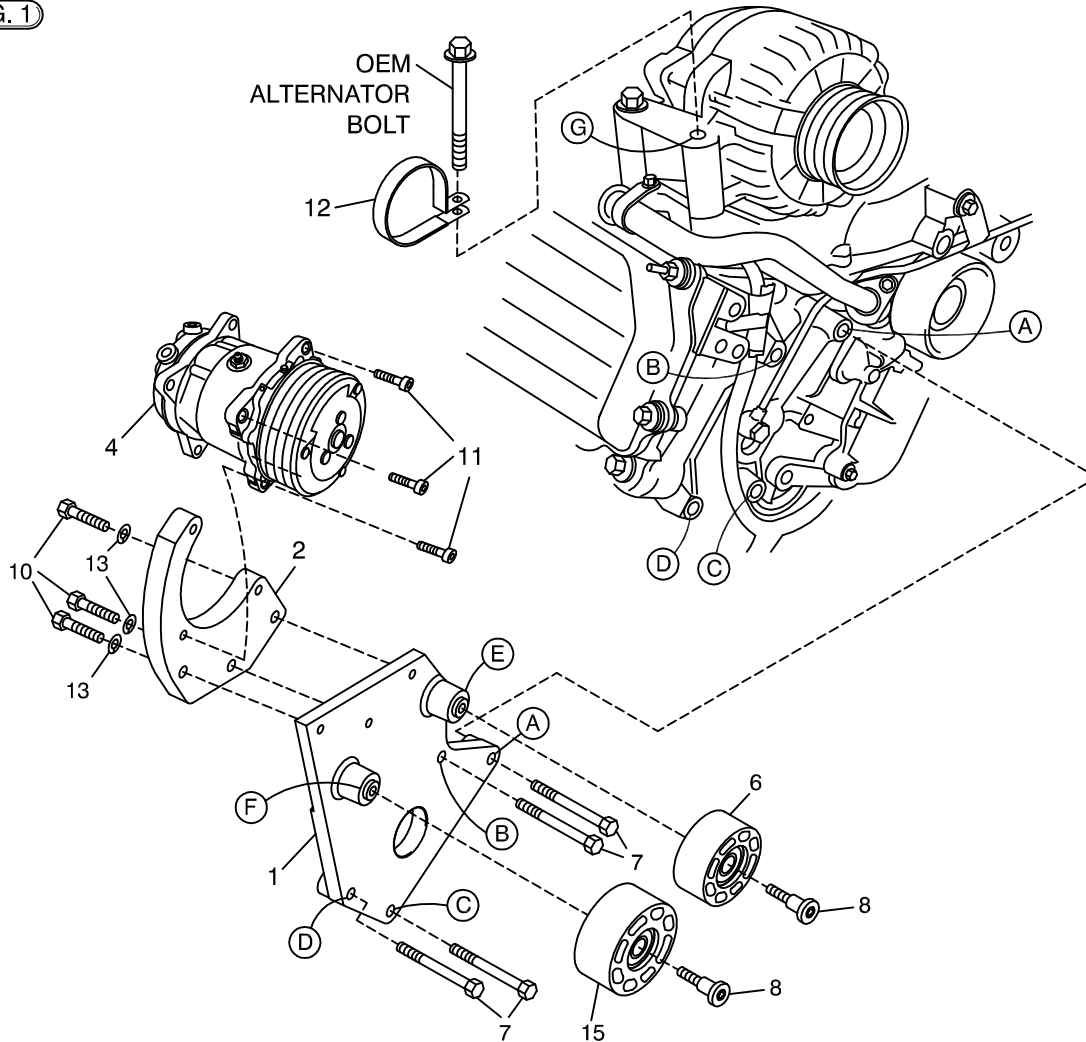
Bracket Assy.	None
Bolt Packages:	
Bracket	711922 (Inc. items 7, 8, 10-13)
Pulley	None
Idler	None
Tensioner	None

Make	Ford
Engine	6.0L
Fuel	Diesel
Year	2003 - 2007
Equipment	Turbo, w/ and w/o A/C
Revised	NC 6-3-08

Item	Part No.	Description
------	----------	-------------

1.	711920	Engine bracket	9.	-----	-----
2.	711921	Compressor bracket	10.	110435	3/8-16 x 1 1/2 Bolt
3.	700272	Intercooler tube	11.	110295	M10 x 1.5 x 30 Socket head bolt
4.	*	Compressor (supplied by customer)	12.	102024	Vinyl clamp, 2 1/2"
5.	-----	-----	13.	110672	3/8 Lock washer
6.	740151	Idler pulley, 3.00" Dia.	14.	740360	Belt, Poly-Cog 1490K8
7.	110488	M10 x 45 x 1.5 Bolt	15.	740373	Idler pulley, 3.40" Dia.
8.	110213	M10 x 40 Torx head shoulder bolt			

FIG. 1



(A),(B),(C)... Denotes bolt holes in engine to locate corresponding holes in Pump Brkt.

FIG. 2

COMPONENT PLACEMENT AND MODIFICATION

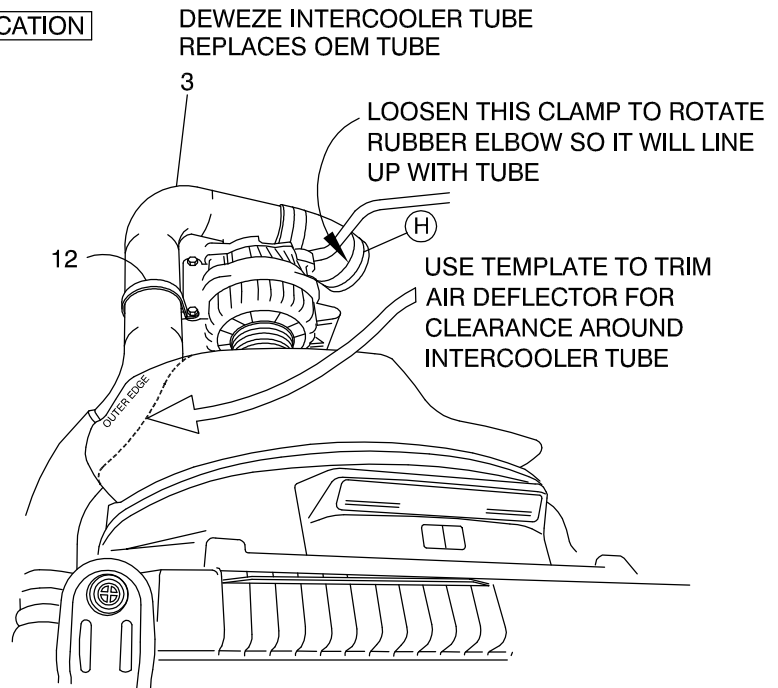


FIG. 3

BELT DIAGRAM

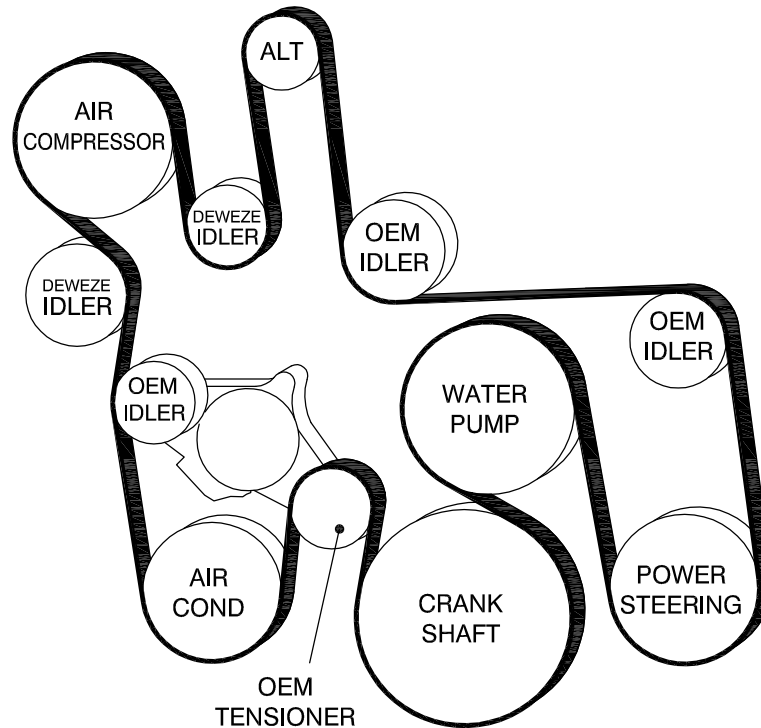
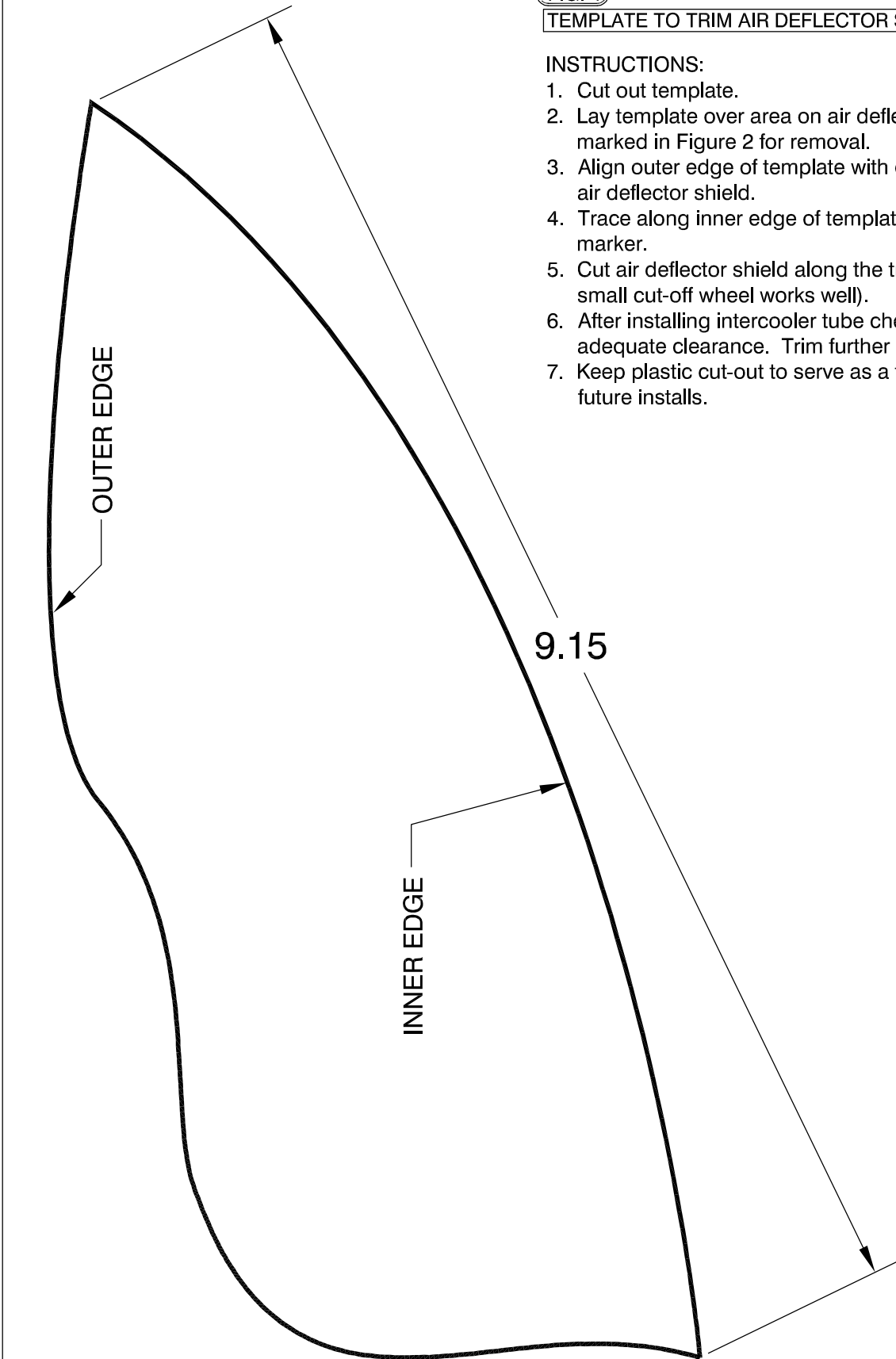


FIG. 4

TEMPLATE TO TRIM AIR DEFLECTOR SHIELD

INSTRUCTIONS:

1. Cut out template.
2. Lay template over area on air deflector shield marked in Figure 2 for removal.
3. Align outer edge of template with outer edge of air deflector shield.
4. Trace along inner edge of template with a marker.
5. Cut air deflector shield along the traced line. (A small cut-off wheel works well).
6. After installing intercooler tube check for adequate clearance. Trim further if necessary.
7. Keep plastic cut-out to serve as a template on future installs.



DewEze

Clutch Pump Kit

Clutch Pump Kit
700487
Ford 6.0
Diesel
With A/C

2008 +

INSTALLATION INSTRUCTIONS

1. Disconnect the battery.
2. Remove the air deflector shield from the top of the fan shroud.
3. Remove the OEM intercooler tube.
4. Remove the OEM belt. The tensioner has a spring to lock it open without any tension. Remove two bolts mounting the tensioner. Just let it lay against the shroud to allow room to mount the pump bracket.
5. Mount compressor bracket (2) onto the engine bracket (1) with three 3/8 x 1 1/2 bolts (10) with a 3/8 lock washer (13) on each bolt.
6. Mount the engine bracket (1) onto the engine with the four M10 x 45 bolts (7). Reattach OEM tensioner with the OEM bolts.
7. Mount compressor (4) onto bracket (2) with the three M10 x 30 socket head bolts (11).
8. Mount the 3.00" dia. idler pulley (6) to the boss on the engine bracket at Location E with the M10 x 40 Torx® head shoulder bolts (8). Mount the 3.40" dia. idler pulley (15) to the boss on the engine bracket at Location F with the M10 x 40 Torx® head shoulder bolts (8).
9. Install the belt (14) as shown in the diagram (Fig. 3). Release the lock on the tensioner to tighten the belt.
10. The deflector shield will need to be trimmed for clearance around the intercooler tube. See the separate template sheet included with the instructions (Fig. 4). Snap the shield into place making sure it does not make contact. See Fig. 2.
11. Install the DewEze intercooler tube (3) into the same location as the OEM tube was. It may be necessary to loosen the hose clamp on the rubber elbow on the turbo (Location H) so the elbow can be rotated to line up with the intercooler tube. Remove the front OEM alternator mounting bolt as shown in Fig. 1. Place the 2 1/2" clamp (12) around the intercooler tube. Secure the clamp with the OEM bolt back in the alternator at Location G. Tighten the OEM hose clamps.
12. Reconnect the battery.
13. Run the engine and check for any clearance or alignment problems. Adjust as needed.